

OUR ONSHORE SERVICES



INDUSTRIAL PAINTING

An undamaged coating system is essential to protect your assets from corrosion and ensure structural integrity.

Future Services has experience with a wide spectrum of paint systems and surface preparation requirements (e.g. abrasive blasting). We believe **good planning** and **clear communication** are essential to execute coating projects in a way that exceeds your expectations.



CONFINED SPACE WORKS

Working in a confined space presents a specific set of challenges. Future Services can supply equipment, certified personnel and know-how to help you navigate these challenges in a **safe** and **efficient** manner.



PROPERTY MAINTENANCE

Property maintenance is an essential aspect of both real estate ownership and property management. For this reason, property managers must put systems in place to maintain functional, comfortable, and safe environments for their buildings' occupants.

Some common services are: **Concrete degradation**, **billboard maintenance**, **window cleaning**, **gutter drainage**...



MECHANICAL WORKS

We offer a wide variety of mechanical works such as: **bolting**, **installation**, **assembly**, **cleaning**, **maintenance** and many more. At height, at sea or within confined spaces, Future Services will get the job done in a **safe**, **efficient** and **economical** manner.

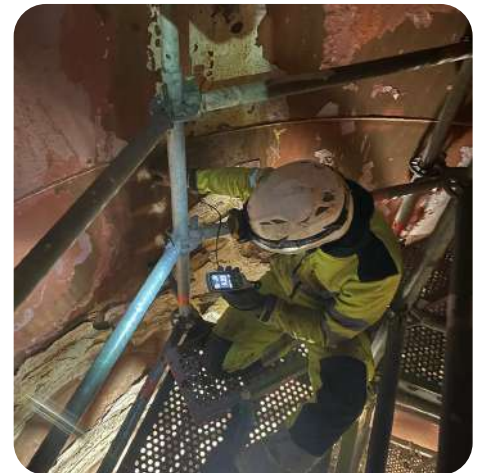


SAFETY NETS

safety nets are used as collective protection for working at height or to shield assets from falling objects.

These nets can be installed in an industrial, civil or infrastructural context.

Because of our Rope Access expertise, Future Services can guarantee a **safe** and **efficient** installation.



NON-DESTRUCTIVE TESTING

An essential part in any maintenance or asset management setting is the assessment of the integrity of materials and structures. Non-destructive testing (NDT) techniques are a fundamental part of these assessments.

Future Services offers a wide range of measurements to suit your needs (e.g. ultrasonic thickness measurements, visual inspections, eddy current testing...).

